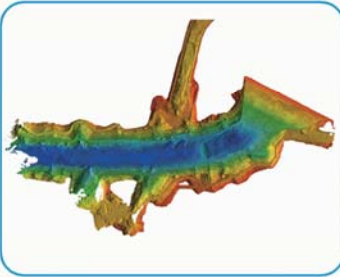


System Extension

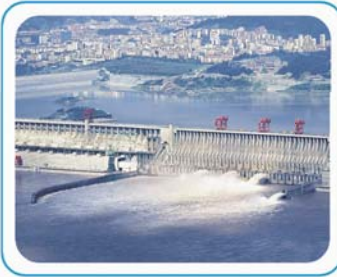
Multiple applications,available for singlebeam echosounder,ADCP,side scan sonar.



Applications



Underwater topographic survey



Hydrographic survey



Underwater landscape survey

Technical Specifications

Hull Parameters	Dimensions	1050mm*550mm*270mm
	Weight of base boat	14KG
	Hull material	Kevlar & carbon fiber high-strength composite
	Hull design	Double M shape,low barycenter,small resistance,stable sailing
	Anti-wave&wind	3rd wind level and 2nd wave level
Power and Eletrical Parameters	Battery endurance	4h@2m/s (The battery pack can be added to improve the battery life)
	Top speed	4.5m/s
	Propulsion	Detachable modular ducted propeller
	Propeller type	Brushless DC
	Direction control	Veering without steering engine and sailing reversely
Safety Guarantee	Auto-return	Auto-return while low battery or signal dropped
Ashore Base	Operating system	Windows
	Communicating mode	RF point to point in real-time
	Transmission range	1,000m
	Navigation mode	Manual or auto-Pilot
Intelligent Controller	Communicating mode	RF point to point in real-time
	Transmission range	1,000m
	Water proof	IP65
	Function	Real-time switching operation mode, control ship speed, steering and other functions, display the basic information
Sounding Performance	Work frequency	200KHz
	Beam angle	5°±0.5°
	Sounding range	0.15~300m
	Sounding accuracy	1cm±0.1%h (h=depth) 1cm depth resolution
Positioning Accuracy	RTK	Horizontal : ±8mm+1ppm RMS Vertical : ±15mm+1ppm RMS
	Beacon (optional)	0.5m (1δ)
	SBAS	1.0m CEP
	Hull control system	Autopilot,hull parameter control,coordinate conversion and etc
System Software	HiMAX sounding software	Supporting parameter configuration,coordinate conversion,depth location collecting,post-processing (simulative depth and digital depth combined for conveniently judging false depth) ,sampling feature point randomly,RTK and tide document for tide gauging,multiple data formats for result output and etc

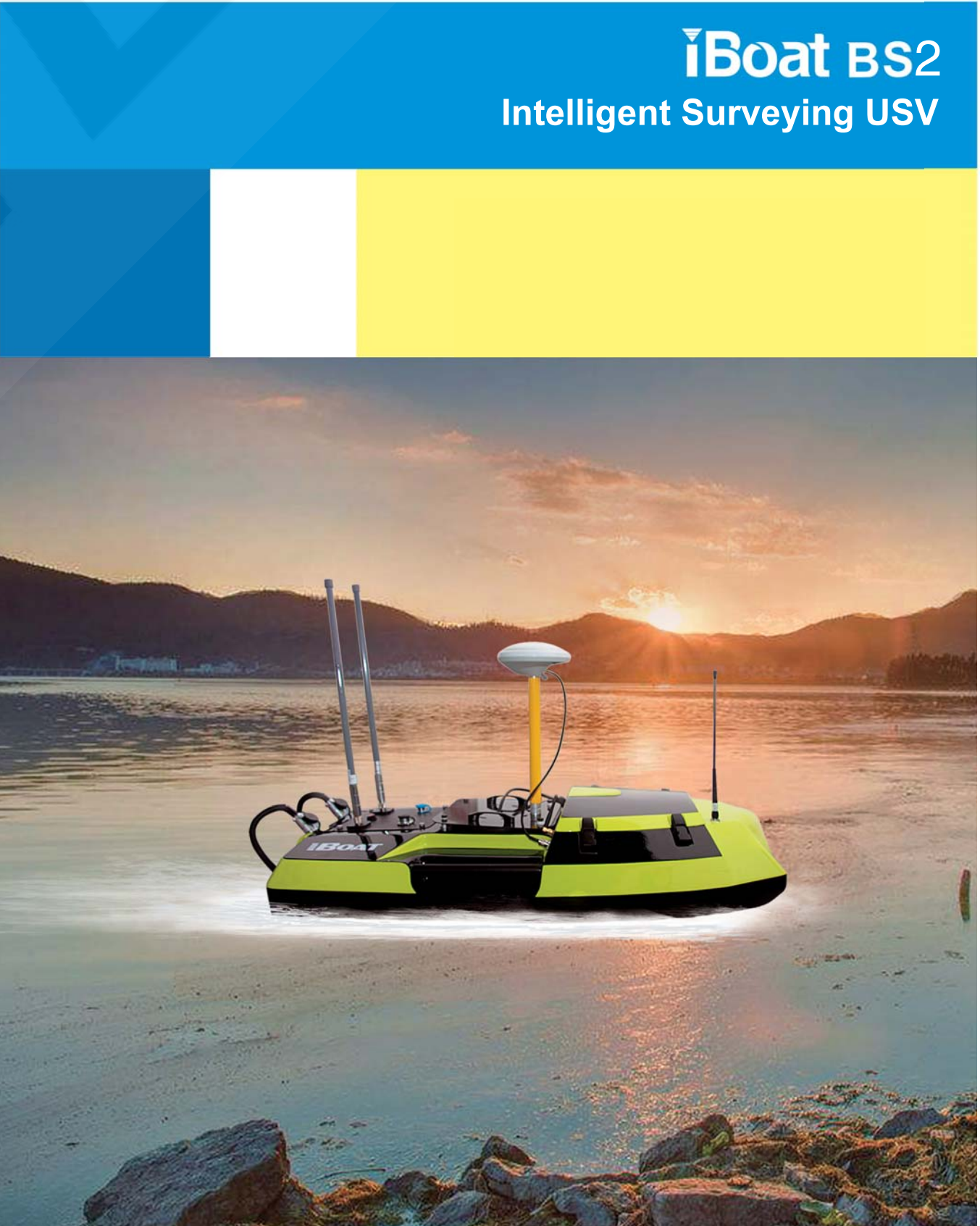
Descriptions and specifications subject to change without notice.

Hi-Target AUTHORIZED DISTRIBUTION PARTNER

Hi-Target Surveying Instrument Co., Ltd.

ADD: Building 13, Tian'An Technology Zone HQ Center, No. 555, the North of Panyu Rd, Panyu District, 511400 Guangzhou, China.
TEL: +86 20 2288 3944 E-mail: info@hi-target.com.cn www.hi-target.com.cn

Hi-Target
Surveying the World, Mapping the Future.



©2018 Hi-Target Surveying Instrument Co., Ltd. All rights reserved.

System Introduction

Hi-Target intelligent USV —— iBoat BS2 is a swift, efficient and robust unmanned surface vehicle, offering the portable, fast, secure and multi-functional service for hydrographic survey and all kinds of water related applications in different environments like rivers, lakes, reservoirs, harbors and even torrents.



System Composition and Features

Hull Structure

- Double-M shape hull
Streamline design
More Stable
- Only 14 KG weight
Small and portable hull convenient for transmission
Available placement in the car trunk
- Kevlar & carbon fiber high-strength composite ,resistant to impact



Power System

	<ul style="list-style-type: none">• Propellers are applied with ducted design and protective shield outside to prevent aquatic plants and fishing net from twining.
	<ul style="list-style-type: none">• Inovative modular design making the propallers easy to remove and maintain. Paralleled level with the boat and convenient for transmission and placement.
	<ul style="list-style-type: none">• Auto-return while low battery or dropped signal .

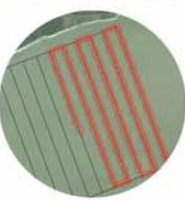
Base System



- Industrial controller is of easy use with one key to switch between manual and automatic mode while control distance reaches 1 Km.



- Applying directive antenna,communicating distance is more than 1 Km.

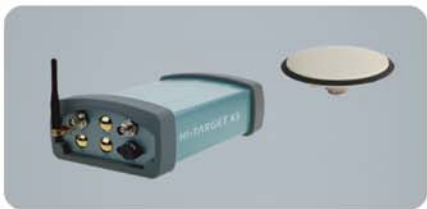


- Automatic operation,automatic navigation,auto-return to fixed point and switch between manual and automatic mode at any time.

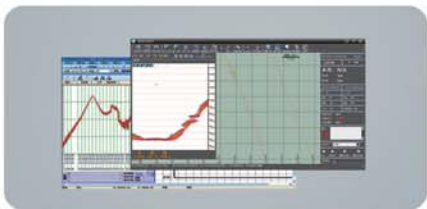
Hi-Target Sensors



- The Hi-Target HD-510 shows fantastic performance with its high-accuracy professional sounding module.The 0.15~300m sounding range adapts to all kinds of complex topographic surveying.



- With Hi-Target high-accuracy GNSS RTK module or DGPS beacon module,the location devices support BDS location equipped with multiple communicating modes including UHF radio , beacon and SBAS.



- HiMAX surveying software is available for collecting,guiding and post-processing.Simulative depth and digital depth are combined for conveniently judging true water depth.